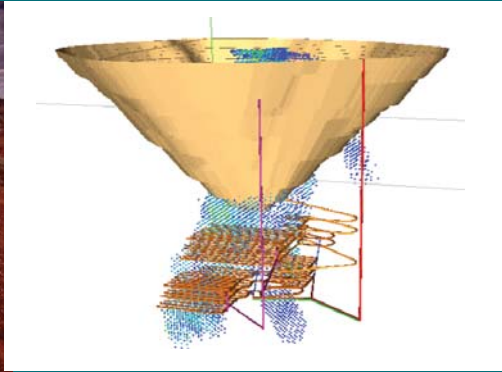


MPES 2010

Mine Planning & Equipment Selection



1 – 3 December 2010, Fremantle, Western Australia

CONFERENCE OVERVIEW

On behalf of the organising committee I invite you to come to Perth, Western Australia for the 19th International Symposium on Mine Planning and Equipment Selection (MPES 2010). MPES is a well recognised international event that focuses on the novel developments of all aspects of mine planning as well as mining equipment. The event has been held in many parts of the world over the past two decades. This time it is being organised to bring together mine planners, equipment manufacturers and suppliers, mining and mechanical engineers, managers and operational staff, researchers and technology persons, software developers and consultants. Papers are sought on the theory and application of mine planning as well as equipment selection focus. All the papers in this symposium will be refereed and a high level of industry participation is being sought.

I hope you will join us at MPES 2010 and have a fruitful and enjoyable experience. A host of other services such as Western Australian hospitality, mine industry visits and relevant short courses will be available.

CONFERENCE CHAIR

Associate Professor Erkan Topal
Head of WASM Mining Engineering and Mine Surveying Department

CO-CHAIRS

Dr Mahinda Kuruppu
Professor Ernesto Villaescusa
Associate Professor Emmanuel Chanda
Dr Jose Saavedra

INTERNATIONAL CHAIR

Dr Raj K Singhal

WORKSHOPS

A series of pre- and post-conference workshops may be organised on topics such as mine production scheduling and optimisation, mine equipment maintenance, mine project evaluation and finance and mine feasibility.

EXHIBITION

A trade exhibition will be held in association with the conference. The exhibition will offer an excellent opportunity for participating companies to display and introduce their products and services to the conference participants.

MINE VISITS

Mine site visits will be organised to available Western Australian mine sites. Please refer to the Conference website via www.ausimm.com.au/mpes2010 for further information and updates.

CALL FOR PAPERS

MAJOR THEMES (with the focus on mine planning and equipment selection)

- Mine Feasibility Case Studies
- Design, Planning and Optimisation of Surface and Underground Mines
- Drilling, Blasting, Tunnelling and Excavation Engineering
- Mining Equipment Selection and Automation
- Maintenance and Production Management
- Mining, Health, Safety and Environment
- Rock Mechanics and Geotechnical Applications
- Risk Management
- Sustainable Development of Mining Resources

Submission of Abstracts

We invite authors wishing to present papers at MPES 2010 to submit an abstract not exceeding 300 words (in English).

Papers which are accepted by the Committee will be subject to peer review and the selection criteria includes relevance to Conference themes, accuracy and originality of ideas, significance of the contribution and quality of presentation. All accepted papers will be published in the Conference Proceedings and presented at Conference technical sessions. Authors are required to attend the Conference to present their papers. The language of the Conference is English.

Please email your submission to:

Olivia Tet Fong, Publications Coordinator, The AusIMM
Telephone: +61 3 9658 6153 Facsimile: +61 3 9662 3662
Email: otetfong@ausimm.com.au

Abstract Submission Deadline, 5 March 2010

For all enquiries including Sponsorship, Exhibition Opportunities and general enquires please contact:

Stephanie Finlay, Coordinator, Conferences & Events
The AusIMM, PO Box 660, Carlton South VIC 3053
Telephone: +61 3 9658 6105 Facsimile: +61 3 9662 3662
Email: sfinlay@ausimm.com.au

AusIMM
AUSTRALASIAN INSTITUTE OF MINING & METALLURGY



Curtin
University of Technology



www.ausimm.com.au/mpes2010



Nineteenth International Symposium on Mine Planning & Equipment Selection

MPES 2010

1 – 3 December 2010, Fremantle, WA, Australia

CONFERENCE CHAIR

Associate Professor Erkan Topal
Head of WASM Mining Engineering and Mine
Surveying Department

CO-CHAIRS

Dr Mahinda Kuruppu
Professor Ernesto Villaescusa
Associate Professor Emmanuel Chanda
Dr Jose Saavedra

INTERNATIONAL CHAIR

Dr Raj K Singhal

INTERNATIONAL ORGANISING COMMITTEE

Professor Derek Apel
Dr Achmad Ardianto
Professor Paul Dunn
Professor Ernest Baafi
Professor Peter Lilly
Dr Atac Bascetin
Professor Christian Buhrow
Dr Marilena Cardu
Mr Ivan Montenegro de Menezes
Professor Euler M De Souza
Dr Nuray Demirel
Professor Samuel Frimpong
Professor Michel Gamache
Professor Mircea Georgescu
Professor John Hadjigeorgiou
Professor Ge Hao
Professor Monika Hardygora
Professor Celal Karpuz
Professor Vladimir Kebo
Dr Vladislav Kecojevic
Professor Andrey V Korchak
Professor Uday Kumar
Professor P P Manca
Professor Per Nicolai Martens
Professor Kikuo Matsui
Dr Louise Michaud
Professor Hani Mitri
Dr Gento Mogi
Dr Vera Muzgina
Dr Dilip Nag
Professor Morteza Osanloo
Mr Sven Erik Österlund
Professor George N Panagiotou
Professor A Günhan Pasamehmetoglu
Dr Juri-Rivaldo Pastarus
Professor Gennadiy Pivnyak
Professor Roman Y Poderni
Mr V S Rao
Professor Branko Salopek
Dr Shigeru Sarata
Professor Malcolm Scoble
Ms M Singhal
Professor Lindolfo Soares
Professor Dwayne D Tannant
Professor Nick Vayenas
Professor Xie Xiaorao
Professor Michael A Zhuravkov
Dr Meimei Zhang



CALL FOR PAPERS

ORGANISED BY

Guizhou Normal University, China; China University of Mining and Technology, Beijing; Department of Mining, Metallurgical and Materials Engineering, Université Laval; The National Technical University of Athens, Greece (NTUA); Dipartimento di Geingegneria e Tecnologie Ambientali, Università degli Studi di Cagliari, Italy; Western Australian School of Mines, Curtin University of Technology, Australia; National Mining University of Ukraine, Dnipropetrovsk; International Journal of Mining, Reclamation and Environment; American Society for Mining and Reclamation; School of Mining and Petroleum Engineering, University of Alberta, Canada; Faculty of Mining and Geology, VSB – Technical University, Ostrava, Czech Republic; Department of Mining Engineering of Middle East Technical University (METU), Turkey; Hokkaido University, Mineral Resources Engineering Department, Japan; Faculty Geoengineering, Mining and Geology, Wrocław University of Technology, Poland; Department of Mining, Metals and Materials, McGill University; Department of Energy and Geo-Environmental Engineering, The Pennsylvania State University; DIGET-Politecnico di Torino, Italy.

MAJOR THEMES TO BE COVERED

- Mine Feasibility Case Studies
- Design, Planning and Optimisation of Surface and Underground Mines
- Drilling, Blasting, Tunneling and Excavation Engineering
- Mining Equipment Selection and Automation
- Maintenance and Production Management
- Mining, Health, Safety and Environment
- Rock Mechanics and Geotechnical Applications
- Risk Management
- Sustainable Development of Mining Resources

For further information please contact:

Associate Professor Erkan Topal

Mining Engineering and Mine Surveying Department
Western Australian School of Mines
Faculty of Science & Engineering
Curtin University of Technology, Australia
Telephone: +61 8 9088 6156
Facsimile: +61 8 9088 6151
Email: e.topal@curtin.edu.au

Official Website: www.ausimm.com.au/mpes2010

CONFERENCE ORGANISERS

The Australasian Institute of Mining and Metallurgy (The AusIMM)
PO Box 660, Carlton South, Victoria 3053, Australia
Stephanie Finlay, Coordinator, Conferences & Events
Telephone: +61 3 9658 6105
Facsimile: +61 3 9662 3662
Email: sfinlay@ausimm.com.au

www.ausimm.com.au/mpes2010